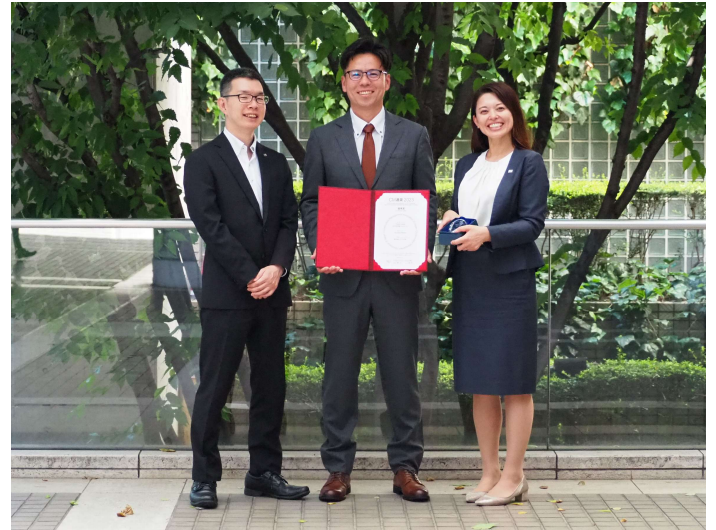


Travelodge Honmachi Osaka Project received 2 awards!



Plus PM received 'Working in Alliance' Award from International Construction Project Management Association (ICPMA) and Excellent Award from Construction Management Association of Japan (CMAJ) for Travelodge Honmachi Osaka Project. It is a project of renovation on an existing hotel in Japan for a Malaysian developer, marking the developer's first subsidiary in Japan.

We provided an innovative double project manager system that effectively bridged 3 countries to allow smooth communication during the challenging pandemic with travel restriction to Japan, where the project was located. Another key to the success was our deep understanding of each country's planning and design constraints that resulted in remarkable time efficiency.

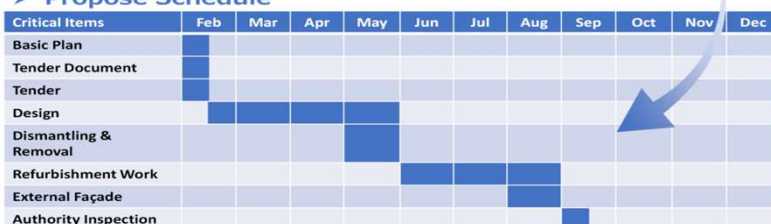
We are greatly honored to receive the awards, and very encouraged to keep providing our best in construction project management.

➤ Original Schedule



3 Months Shortening

➤ Propose Schedule



What is ICPMA?

The International Construction and Project Management Association (ICPMA) is a distinguished global organization dedicated to promoting best practices in construction and project management across the world.

What is CMAJ?

Construction Management Association of Japan (CMAJ) is an organization established to disseminate the construction production method known as construction management (CM) and the profession of construction manager (CMr) in Japan.

For more information for the project,
 Please visit our website.

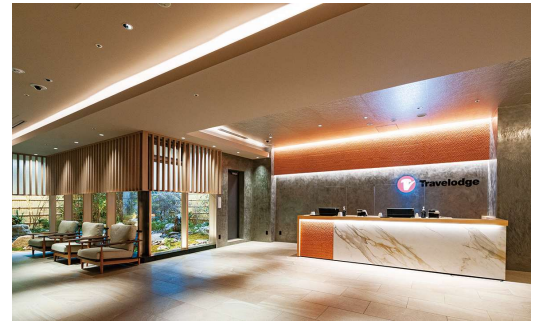


Travelodge Kyoto Shijo Kawaramachi has opened

Following the opening of Travelodge Honmachi Osaka in September 2022, we were entrusted by the Malaysia Developer with another hotel renovation project “Travelodge Kyoto Shijo Kawaramachi” located in Kyoto, Japan.

The key to the success of the project was providing decision –making support to the domestic and international stakeholders who own and run the hotel. In addition, we had to manage the challenges of Kyoto’s strict regulations and construction constraints as it is one of Japan’s leading tourist cities.

Plus PM supported a smooth progress of the project by bridging the people involved in the project, and managed not only in construction aspect, but also coordinated in communication related to the business plan. Simultaneous bilateral management was another key to success. Synergy of good relationship among the people in Travelodge Honmachi Osaka Project and Know-how of managing renovation projects could shorten the project term, and the hotel was successfully opened within a short construction period of only 8 months from kick-off.



Travelodge Kyoto Shijo Kawaramachi Project

Client	/ Malaysian Investing company
Location	/ Kyoto, Japan
Usage	/ Hotel
CM	/ Plus PM Co., Ltd. and Plus PM Consultant Sdn Bhd
GFA	/ 4,800m ²

Beach cleaning in Langkawi Island



As celebrating of 10 years establishment of Plus PM Consultant Sdn Bhd, we went to Langkawi Island as an Anniversary trip. There, we conducted beach cleaning as one of our CSR activities, collaborating ‘Trash Hero Langkawi,’ a volunteer environmental organization.

Throughout the activity, we committed environmental preservation as well as we fostered a sense of unity and collaboration among employees and boosted morale and team spirit.

Staff Introduction

I joined Plus PM Consultant as a Sales assistant in September 2022. My work is mainly preparing materials and website articles for marketing and translating them into English/Japanese. I am also in charge of making Plus Update, the company’s newsletter where it is aimed to introduce our service, passion and sincerity. Although I had never worked in the construction industry, I really enjoy my work by communicating with my colleagues.

On weekends, I like traveling and watching movies. I usually go on a short trip to Thailand or Vietnam. Since there are many movie theaters in KL, I enjoy watching new movies.



Mika Nakatani
Sales & Admin
Executive

+PM The decision for Plus. Plus PM Consultant

Managing Director/CEO JOJI KIMURA

KL Address 16-16, 16th Floor, Wisma UOA II, Jalan Pinang, 50450
Kuala Lumpur, Malaysia
TEL +603-2712-0263 FAX +603-2712-0264

Hanoi Address 16th floor, Daeha Business Center, 360 Kim Ma Street,
Ba Dinh District, Hanoi, Vietnam
TEL +8424-3267-3623

Website <https://www.plus-pm.com>

Email contact@pluspmc.com

※We value your opinion and welcome your feedback. For further enquiry, please email or visit us at our office.

+PM その決断を、プラスに。 株式会社 プラスPM

代表取締役 木村 譲二

本社 〒530-0047 大阪市北区西天満2丁目8番5号 西天満大治ビル
TEL 06-6363-6066(代) FAX 06-6363-6466

東京支店 〒103-0023 東京都中央区日本橋本町3丁目4-6
ニューカフビル3階

TEL 03-6665-0053 FAX 03-6665-0054

ホームページ <https://www.plus-pm.com>

Eメール info@plusweb.co.jp

※本誌に対するご意見、ご感想をお待ちしております。お問い合わせ先は、上記Eメール又は本社総務部まで